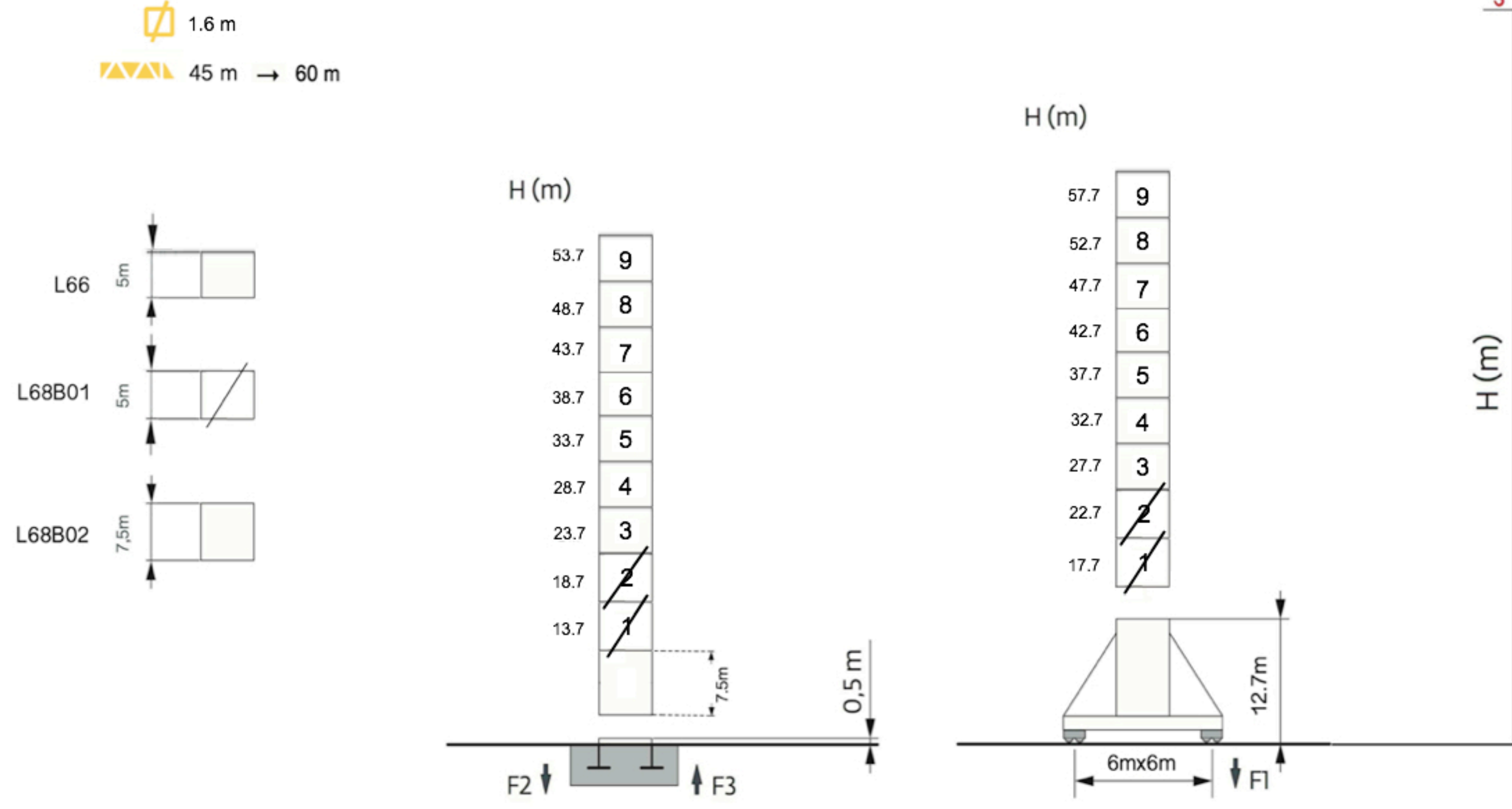
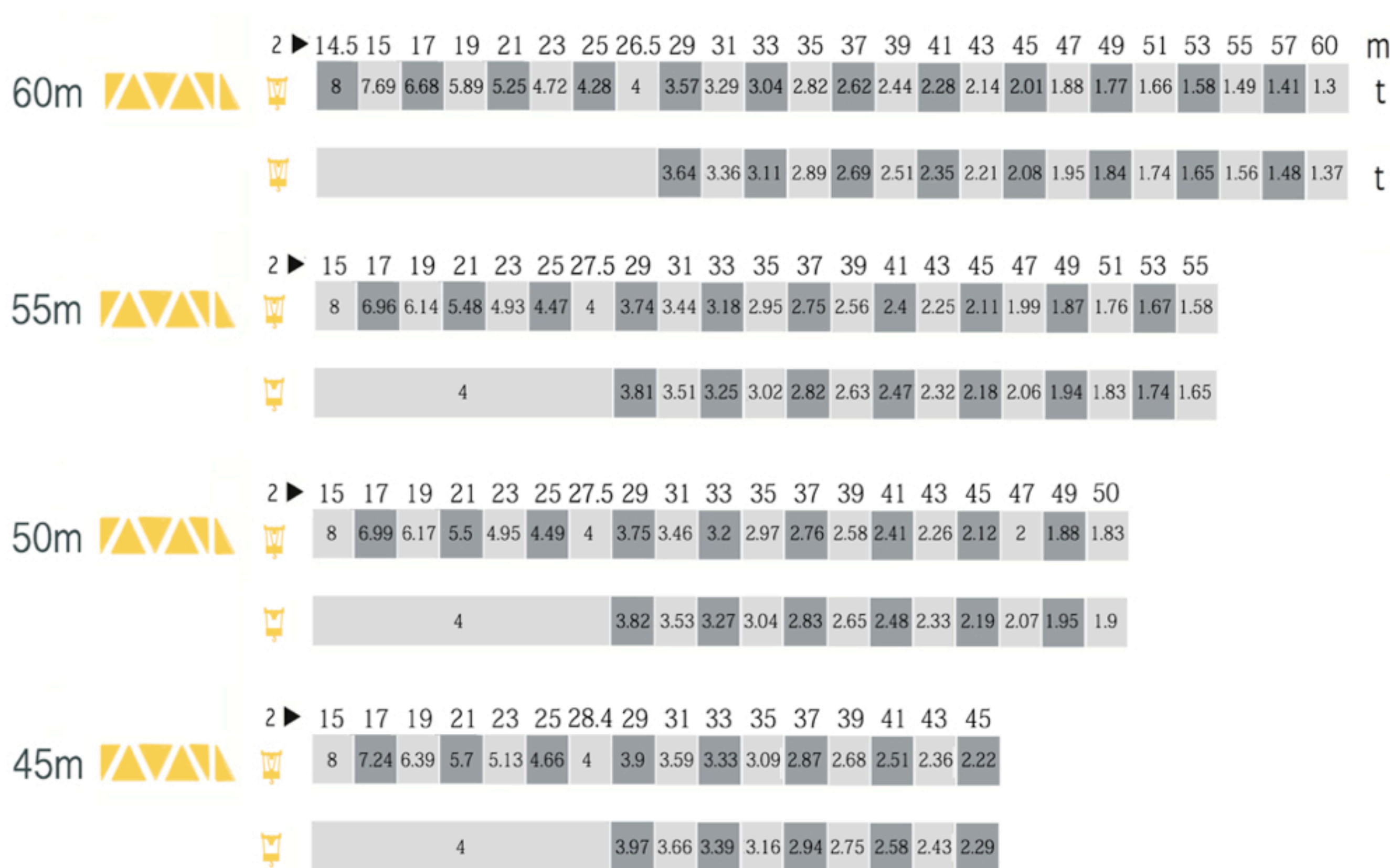


# LS110 65T

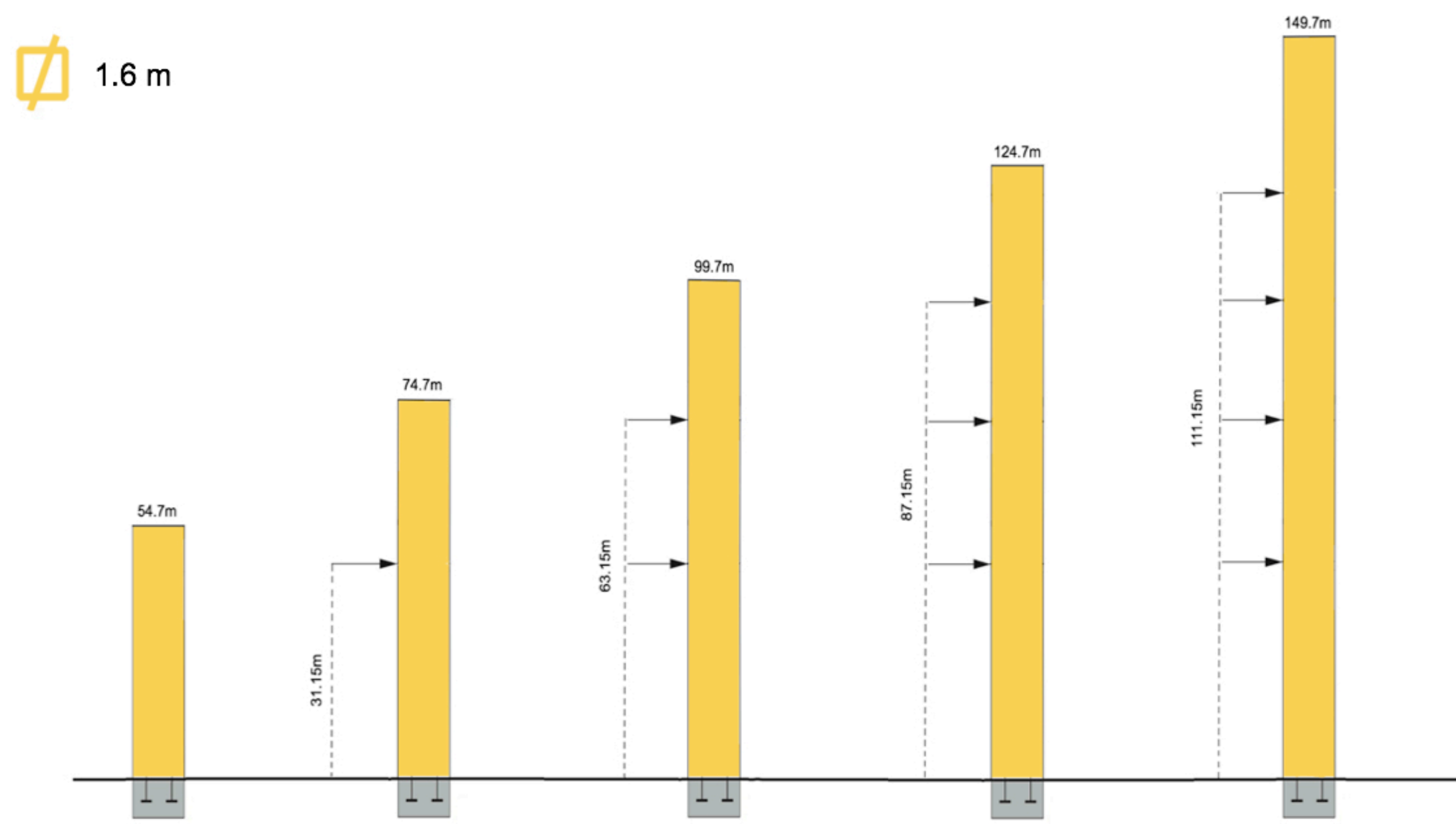
## Mast - Reactions



## Load Diagrams



## Anchorage



## Mechanisms

400 V - 50 Hz						hp	kW	
	Hoisting	m/min	0 → 42	0 → 85	0 → 21	0 → 42	53.3	45
		t	5	2.5	10	5		
	Trolleying	m/min	0 → 58					5.5
	Stewing	rpm	0 → 0.8				2 x 5.5	2 x 5.5
	Travelling	<span style="color: orange;">▮</span> 2 m	20				4 x 4.6	4 x 3.4
Main Supply				IEC 38 / CEI 38		400 V (+6% -10%) 50 Hz		
Necessary Electric Power						81.1kW		

## Dimensions and Weight

Slewing crane part	<span style="color: orange;">▮▮▮</span> 60 m -			60LVF	L (m)	l (m)	h (m)	kg (+/- 5%)
Counter-jib		6.99	2.61	1.40	1226			
		5.17	1.56	2.22	1763			
Cab		2.30	1.40	2.24	385			
Cathead		5.69	2.25	2.05	5450			
Jib section		10.78	1.43	2.20	2530			
Jib section		10.25	1.38	2.09	1840			
		10.22	1.38	1.73	1325			
		10.20	1.38	1.71	925			
		10.18	1.38	1.67	640			
Jib section		5.18	1.38	1.47	330			
		5.18	1.38	1.47	330			
		5.14	1.38	1.47	290			
		0.50	1.60	1.04	60			
Trolley		2.02	1.63	1.01	500			
Pulley block		1.37	0.33	2.00	400			
<b>Telescoping equipment</b>					L (m)	l (m)	h (m)	kg (+/- 5%)
Telescopic cage		<span style="color: orange;">▮</span> 1.6m	10.2	3.71	3.71	4500		

Masts	<span style="color: orange;">▮</span> 1.6 m	L (m)	l (m)	h (m)	kg
		7.74	1.67	1.73	3100
L 66 A2 L 68 B2		5.24 5.24	1.67 1.67	1.73 1.73	2050 1900
<b>Crane bases</b>					
Fixing angles		0.74 1.15	0.5 0.5	0.5 0.5	165 215
Basic mast unit		4.82	2.06	2.06	3520
Struts		4.11	0.26	0.27	355
Half-bearer		5.2	0.70	1.76	1500

## Shipping

