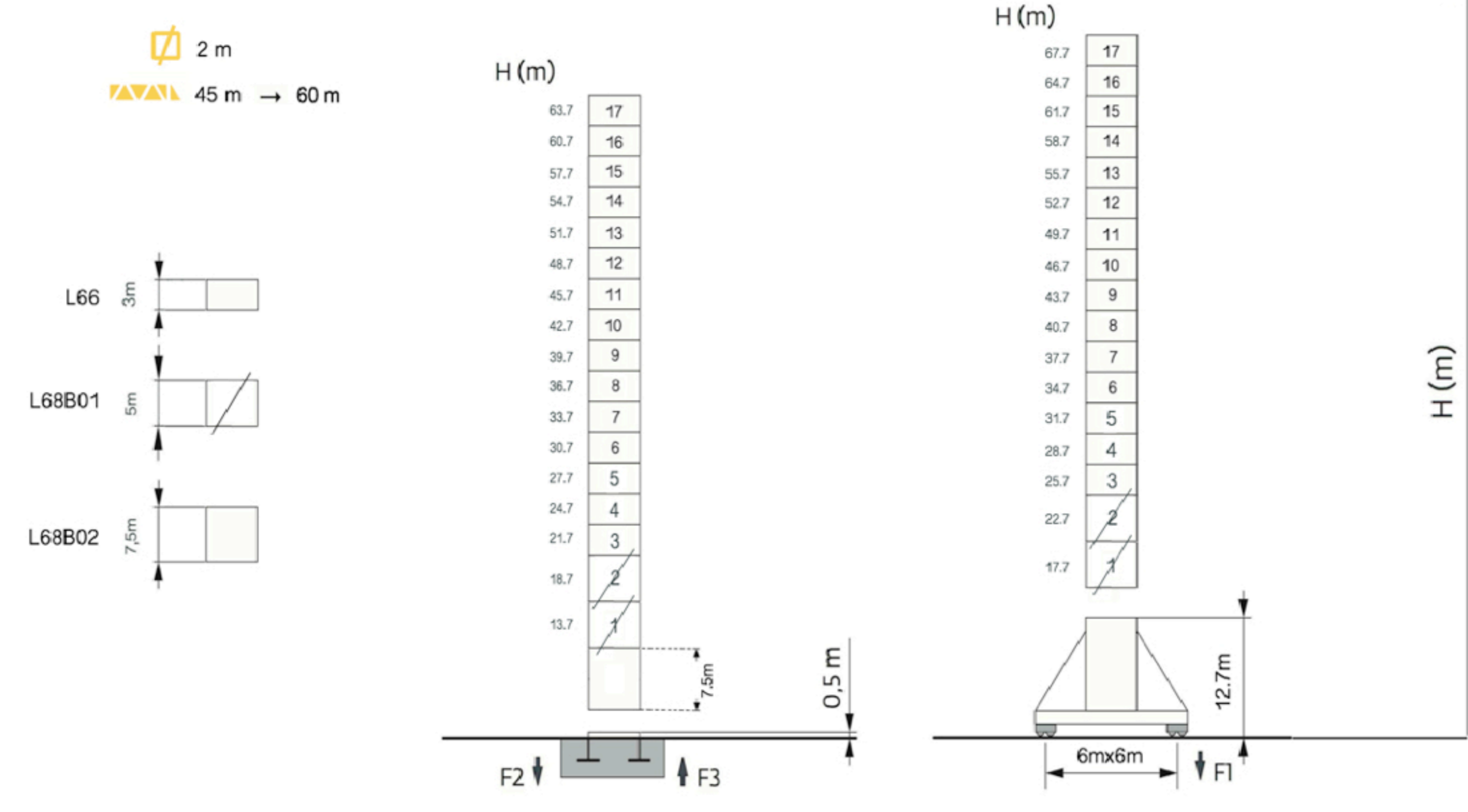
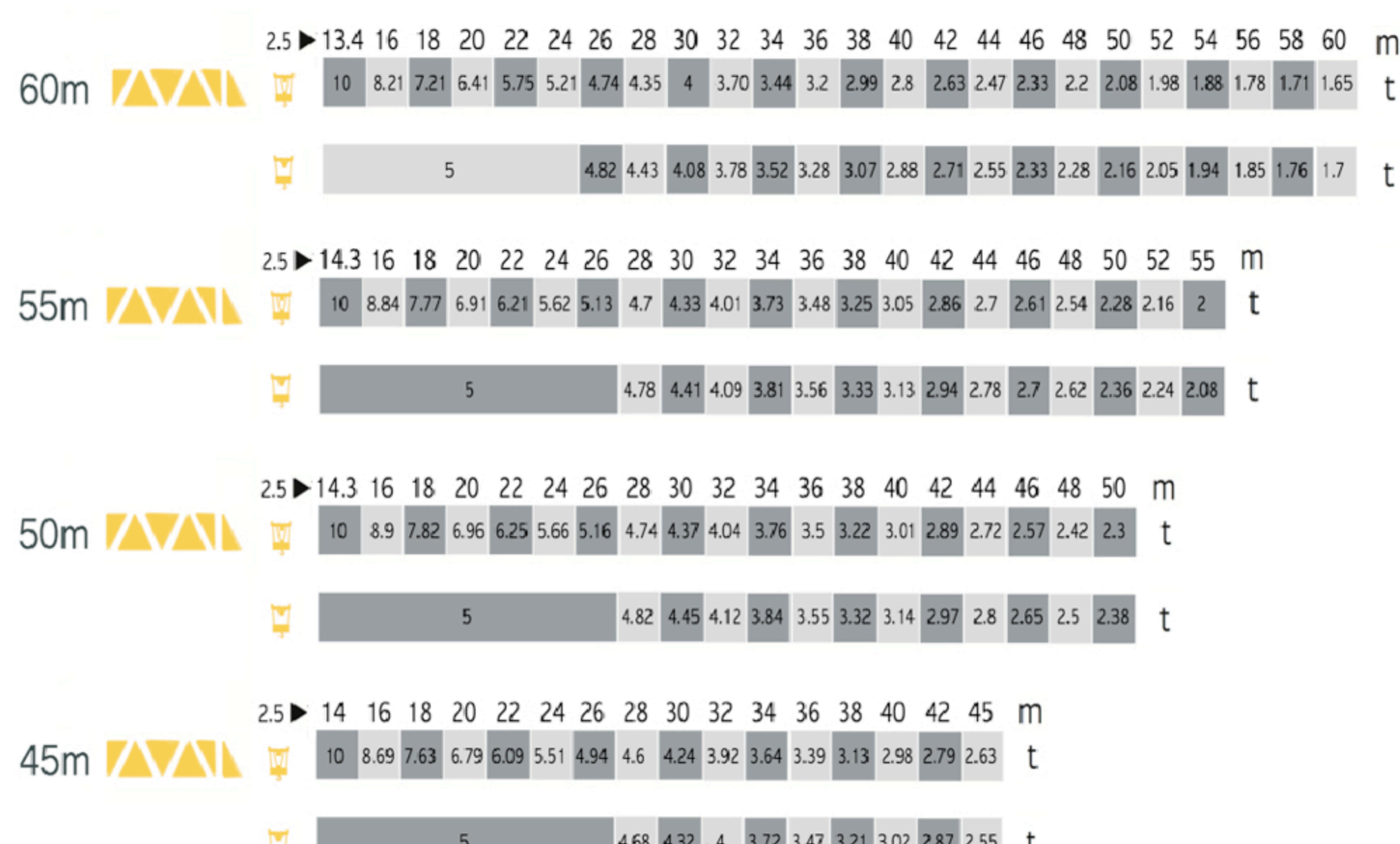


LS170 60T

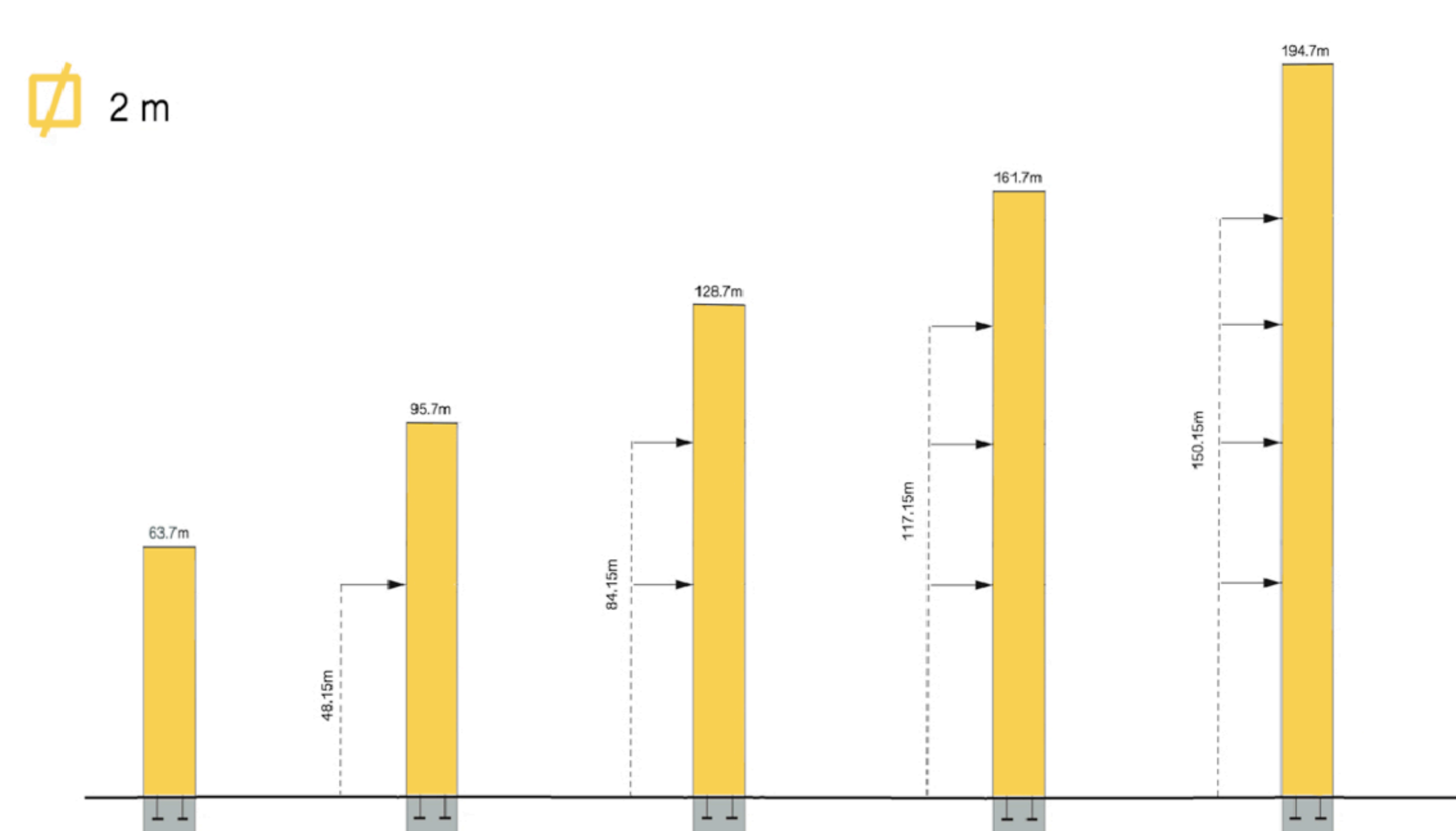
Mast - Reactions



Load Diagrams



Anchorage



Mechanisms

400 V - 50 Hz						hp	kW		
	Hoisting	m/min	0 → 42	0 → 85	0 → 21	0 → 42	53.3	45	500m
		t	5	2.5	10	5			
	Trolleying	m/min	0 → 58						5.5
	Slewing	rpm	0 → 0.8				2 x 5.5	2 x 5.5	
	Travelling	▣ 2 m	20				4 x 4.6	4 x 3.4	
Main Supply					400 V (+6%-10%) 50 Hz				
Necessary Electric Power			81.1kW						

Dimensions and Weight

Slewing crane part	▤▤▤▤▤ 60 m -	L (m)	I (m)	h (m)	kg (+/-5%)
Counter-jib		6.83	2.60	1.50	1080
		6.75	1.56	1.50	1125
Cab		2.30	1.40	2.24	385
Cathead		11.90	2.68	2.5	8475
Jib section		10.18	1.62	1.77	1600
Jib section		10.19	1.48	1.63	1090
		10.19	1.48	1.61	840
		10.19	1.48	1.61	750
Jib section		5.19	1.48	1.61	465
		5.19	1.48	1.32	390
		5.19	1.48	1.32	365
		5.19	1.48	1.32	365
Trolley		1.90	1.80	0.74	415
Pulley block		1.17	0.26	1.29	360

Telescoping equipment		L (m)	I (m)	h (m)	kg (+/-5%)
Telescopic cage		7.26	4.30	4.30	6650

Masts		L (m)	I (m)	h (m)	kg (+/-5%)
		7.76	2.08	2.1	4345
L 66 A2 L 68 B2		3.26	2.08	2.1	1235
		3.26	2.08	2.1	1335
Crane bases					
Fixing angles		0.76	0.6	0.6	225
		1.19	0.6	0.6	285
Basic mast unit		4.82	2.43	2.43	4165
Struts		4.51	0.26	0.27	380
Half-bearer		6.7	0.70	2.31	1725

Shipping

x 6
 x 4

